



# DI V AS

# SHOWCASE OF JUMPING

2<sup>nd</sup> – 4<sup>th</sup> May 2025  
Windsor Polo Club

[showcaseofshowjumping.com](http://showcaseofshowjumping.com)

## SCHEDULE

Entries via [entry.equipe.com](http://entry.equipe.com)

Email queries – [showcaseofshowjumping@gmail.com](mailto:showcaseofshowjumping@gmail.com)

Entries Open Thursday April 3<sup>rd</sup> at 10am

Entries Close Tuesday 15<sup>th</sup> April 11.59pm

or earlier if classes are full

# WELCOME

Showcase of Showjumping returns proudly sponsored by Divas Beverages after a 9-year hiatus, the team behind the Showcase of Showjumping is thrilled to welcome you back for an unforgettable 2025 event!

## SHOW PROGRAM HIGHLIGHTS



**SATURDAY**

**VIP MARQUEE**

**\$11,750**

**CHATHAM PARK  
FUTURITY**

**\$92,000**

**TEAMS SPECTACULAR**

**SUNDAY**

**VIP MARQUEE**

**\$12,250**

**WINNING APPLIANCES  
MINI PRIX**

**\$50,000**

**DIVAS BEVERAGES  
GRAND PRIX**

**PLUS JUNIOR, YOUNG RIDER, AMATEURS, GET OUT STAKES,  
YOUNG HORSES AND PATRONS CLASSES ALL SHOW**



**SHOW** CASE OF JUMPING

**ORGANISER**

Yandoo Equestrian Services t/as Showcase of Showjumping ABN 33698286200

**EVENT SECRETARY**

Wendy van Sonsbeek e:showcaseofshowjumping@gmail.com m:0403 707 299

**OFFICIALS**

**President of Ground Jury** Michael Archer

**Technical Delegate** Gavin Chester

**Judge Polo Field 1** Michael Archer

**Judge Polo Field 2** Megan Scrivener

**Course Builder Polo Field 1** Frank Rothenberger

**Assistant Course Builder** Gavin Chester

**Course Builder Polo Field 2** Ed McNair

**SCRATCHINGS / REFUNDS**

**A vet or medical certificate must be presented for all refunds from time of entry.**

Scratchings received before close of entries (**11.59pm, 15<sup>th</sup> April 2025 or earlier if full**) will receive a full refund of entry fees and stabling if stables are not erected. Less a \$50 admin fee.

Scratchings received after the close of entries (**11.59pm, 15<sup>th</sup> April 2025 or earlier if full**) will receive a 50% refund of entries less a \$50 admin fee. Scratchings received **on or after 18<sup>th</sup> April 2025 until 5pm 1<sup>st</sup> May 2025** will receive a 50% refund of entry fees less admin fee, Stable fees after this time will not be refunded on or after **21<sup>st</sup> April 2025** unless they can be on sold by the organisers. **NO REFUNDS** will be given once show commences at 8am Friday 2<sup>nd</sup> May. A vet or medical certificate must be presented for all refunds from time of entry. All scratchings must be advised via email to **showcaseofshowjumping@gmail.com**

**LICENCES**

All riders and owners must be current financial members of EA with no exception. All horses and ponies competing in classes over 105cm must hold current EA registration and jumping licences. Horses and ponies competing in classes 104cm and under must hold a base registration. Entry checks will be undertaken.

**RELEASE AND INDEMNITY**

You acknowledge that horse riding, working with or being around horses can be dangerous. Horses can act in sudden and unpredictable ways, especially if frightened or hurt. As a consequence, there is a real risk of damage to property, serious injury or even death. In consideration of acceptance of your entry and participation in the event you agree to release and forever discharge Yandoo Equestrian Services, Showcase of Showjumping, Windsor Polo Club, EA, NSW, their servants and agents and the Organising Committee and each member thereof from all claims, proceedings or demands for any loss or damage howsoever arising from any accident or incident occurring at the event.

In consideration of acceptance of your entry and participation in the event, you agree to indemnify and keep indemnified Yandoo Equestrian Services, Showcase of Showjumping, Windsor Polo Club, EA, NSW, their servants and agents and the Organising Committee and each member thereof from all claims, , proceedings or demands brought by or on behalf of any participant or competitor named in your entry form for any loss or damage howsoever arising from any accident or incident occurring at the event.

By entering this event is your acceptance of above release.







**INVITATIONAL SHOW**

Entry is not guaranteed. Entries will be confirmed via equipe acceptance.



**TRUCKS TO STAY AT SHOWGROUNDS**

**SATURDAY – Until After Teams Spectacular**

**SUNDAY – Until After Grand Prix.** Approx 4.30pm.



**ENTRY \$500** for Show. This includes a \$50 Admin Fee plus all classes



**1 START PER DAY PER HORSE**

**except FUTURITY** horses that may start twice on Friday 2<sup>nd</sup> May only Futurity horses may only enter **Get Out Stakes** if only doing 1 class on Friday.



**DRESS CODE**

**FRIDAY** - Light coloured breeches and polo shirts, neat tidy and tucked in, shirts must have a collar and go down at least to elbow length. No singlets, No dark breeches

**SATURDAY/SUNDAY** –Competition attire .  
(apart from teams spectacular).

**TEAMS SPECTACULAR**

- Team sponsors must also be sponsors of the show
- Class will be run over 1 round with 4 riders, 3 best scores to count.
- YR jumps 135cm, Senior jump 145cm with a tighter time allowed
- If teams are on equal first place penalties after round 1, one senior rider from each team will jump off.
- Minor placings will be on penalties only so potentially could have equal 2nd 3rd etc.
- Dress code will be white/light colored matching breeches and matching polo shirts.
- Teams have to supply own uniforms and are encouraged to get sponsors logo, team name etc put on.
- 8 Young Riders are automatically qualified for class 9 the other 27 young riders come from class 6
- Speed for Young Riders will be 350 mpm. Speed for Seniors will be 375mpm

**ASHFORD FARM PATRONS CLASS**

- Strict entry applies to Sponsors/Supporters of the show
- Amateurs can also jump Patrons class on a different horse with permission from show organisers.

**CALIERA PERFORMANCE HORSES YOUNG HORSE**

- Height will start at 115cm for 5 YO, then the height will be adjusted to 120cm for 6 YO. Both age groups will compete as 1 class.



Allira Fontana  
PHOTOGRAPHY

## FRIDAY 2<sup>ND</sup> MAY 2025

### Polo Field 1

# SCHEDULE

CLASS 1	8am <b>ASHFORD FARM PATRONS CLASS</b>	Height approx. 100cm Article 274.2 <b>Prizes to 6th</b>	
CLASS 2	10am <b>110CM SPECIAL 2 PHASE</b>	Height approx. 110cm Article 274.2 1 <sup>st</sup> \$300, 2 <sup>nd</sup> \$200, 3 <sup>rd</sup> \$150, 4 <sup>th</sup> \$100, 5 <sup>th</sup> \$100, 6 <sup>th</sup> \$50 <b>TOTAL \$900</b>	
CLASS 3	<b>120CM SPECIAL 2 PHASE</b>	Height approx. 120cm Article 274.2 1 <sup>st</sup> \$300, 2 <sup>nd</sup> \$200, 3 <sup>rd</sup> \$150, 4 <sup>th</sup> \$100, 5 <sup>th</sup> \$100, 6 <sup>th</sup> \$50 <b>TOTAL \$900</b>	
CLASS 4	<b>130CM SPECIAL 2 PHASE</b>	Height approx. 130cm Article 274.2 1 <sup>st</sup> \$400, 2 <sup>nd</sup> \$300, 3 <sup>rd</sup> \$200, 4 <sup>th</sup> \$150, 5 <sup>th</sup> \$100, 6 <sup>th</sup> \$50 <b>TOTAL \$1,200</b>	
CLASS 5	<b>140CM SPECIAL 2 PHASE</b>	Height approx. 140cm Article 274.2 1 <sup>st</sup> \$400, 2 <sup>nd</sup> \$300, 3 <sup>rd</sup> \$200, 4 <sup>th</sup> \$150, 5 <sup>th</sup> \$100, 6 <sup>th</sup> \$50 <b>TOTAL \$1,200</b>	

Please note – all times published are approximate and to be used as a guide only.

**SATURDAY 3<sup>RD</sup> MAY 2025**

**POLO FIELD 1**

8am  
**CLASS 6**  
**PEACHESTER LODGE YOUNG RIDER QUALIFIER**  
 Height approx. 130cm  
 Article 238 2.1  
 1<sup>st</sup> \$400, 2<sup>nd</sup> \$300, 3<sup>rd</sup> \$200, 4<sup>th</sup> \$150, 5<sup>th</sup> \$100, 6<sup>th</sup> \$50  
**TOTAL \$1,250**



9.45am  
**CLASS 7**  
**WINNING APPLIANCES MINI PRIX QUALIFIER**  
 Height approx. 140cm  
 Article 238 2.1  
 1<sup>st</sup> \$600, 2<sup>nd</sup> \$400, 3<sup>rd</sup> \$300, 4<sup>th</sup> \$250, 5<sup>th</sup> \$200, 6<sup>th</sup> \$200  
**TOTAL \$1,950**



12pm  
**CLASS 8**  
**CHATHAM PARK FUTURITY**  
 Article 238 2.2  
 1<sup>st</sup> \$4,000, 2<sup>nd</sup> \$3,000, 3<sup>rd</sup> \$2,000, 4<sup>th</sup> \$1,000, 5<sup>th</sup> \$750, 6<sup>th</sup> \$500, 7<sup>th</sup> \$250, 8<sup>th</sup> \$250, **TOTAL \$11,750**  
**For 6,7 and 8 Year Old horses at time of show**  
**Max 2 horses per rider**



3pm  
**CLASS 9**  
**TEAMS SPECTACULAR**  
 Young Rider 135cm, Senior 145cm  
 Article 264  
 1<sup>st</sup> 25,000, 2<sup>nd</sup> 20,000, 3<sup>rd</sup> 15,000, 4<sup>th</sup> 10,000, 5<sup>th</sup> 8,000, 6<sup>th</sup> 5,000, 7<sup>th</sup> 5,000, 8<sup>th</sup> 5,000 **TOTAL \$93,000**  
**Prizemoney per team of 4**

**POLO FIELD 2**

7.45am  
**CLASS 10**  
**G BROTHERS 140CM/145CM**  
 Article 238 2.1  
 1<sup>st</sup> \$600, 2<sup>nd</sup> \$400, 3<sup>rd</sup> \$250, 4<sup>th</sup> \$150, 5<sup>th</sup> \$100, 6<sup>th</sup> \$100  
**TOTAL \$1600**  
**This class is for GP horses not competing in teams class 9**



8.30am  
**CLASS 11**  
**MAGIC MILLIONS YOUNG HORSE**  
 5YO – 115cm, 6YO – 120cm  
 Article 238.1.1  
**TOTAL \$1,000 (Athletes share prizes for equality of placings)**



10.30am  
**CLASS 12**  
**KING RANCH EQUESTRIAN JUNIOR QUALIFIER**  
 Height approx. 120/125cm  
 Article 274.2  
 1<sup>st</sup> \$300, 2<sup>nd</sup> \$200, 3<sup>rd</sup> \$150, 4<sup>th</sup> \$100, 5<sup>th</sup> \$100, 6<sup>th</sup> \$100  
**TOTAL \$950**



12.30pm  
**CLASS 13**  
**ASHFORD FARM PATRONS CLASS**  
 Height approx. 105cm  
 Article 238 2.1  
**Prizes to 6th**



1.45pm  
**CLASS 14**  
**J & J ROBERTSON TRANSPORT AMATEUR QUALIFIER**  
 Height approx. 115cm  
 Article 238 2.1  
**\$500 split plus Prizes**



**SCHEDULE**

Please note – all times published are approximate and to be used as a guide only.



**SUNDAY 4<sup>TH</sup> MAY 2025**

**POLO FIELD 1**

<b>SCHEDULE</b>	CLASS 15	8am <b>ASHFORD FARM PATRONS FINAL</b>	Height approx. 105cm Article 238 2.2 1st \$350, 2nd \$250, 3rd \$150, 4th \$100, 5th \$100, 6th \$100, 7th \$50, 8th \$50 <b>TOTAL \$1250</b>	
	CLASS 16	9.45am <b>PEACHESTER LODGE YOUNG RIDER FINAL</b>	Height approx. 135cm Article 238 2.2 1st \$1,500, 2nd \$1,000, 3rd \$750, 4th \$600, 5th \$500, 6th \$250, 7th \$200, 8th \$200 <b>TOTAL \$5,000</b> <b>Top 35 from class 6 &amp; 9. Max 2 horses per rider.</b>	
	CLASS 17	12pm <b>WINNING APPLIANCES MINI PRIX FINAL</b>	Height approx. 140cm Article 238 2.2 1st \$5,000, 2nd \$3,000, 3rd \$1,500, 4th \$1,000, 5th \$750, 6th \$500, 7th \$250, 8th \$250 <b>TOTAL \$12,250</b> <b>Top 35 from class 7 plus any teams horse automatically qualifies. Max 2 horses per rider</b>	
	CLASS 18	3pm <b>DIVAS BEVERAGES GRAND PRIX</b>	Height approx. 150cm Article 238 2.2 1st \$20,000, 2nd \$12,000, 3rd \$6,000 4th \$4,000, 5th \$3,000 6th \$2,000, 7th \$2,000, 8th \$1,000 <b>TOTAL \$50,000</b> <b>Horses must have completed 1 class from 5,9 or 10. Max 2 horses per rider.</b>	

**POLO FIELD 2**

<b>SCHEDULE</b>	CLASS 19	7.45am <b>GET OUT STAKES</b>	Height approx. 135cm Article 238 2.1 1st \$1,500, 2nd \$1,000, 3rd \$750, 4th \$600, 5th \$500, 6th \$250, 7th \$200, 8th \$200 <b>TOTAL \$5,000</b> <b>For Horses from class 8 and horses not qualified for class 16 &amp; 17 or horses where a rider had more than 2 horses for class 16 &amp; 17. Max 2 horses per rider. Futurity horses cannot enter this event if they had 2 starts on Friday.</b>	
	CLASS 20	8.30am <b>MAGIC MILLIONS YOUNG HORSE</b>	5YO – 115cm, 6YO – 120cm Article 238.2.2 & 245.3 Immediate Jump Off 1st \$400, 2nd \$300, 3rd \$200, 4th \$150, 5th \$100, 6th \$100 7th \$50, 8th \$50 <b>TOTAL \$1350</b>	
	CLASS 21	12pm <b>J &amp; J ROBERTSON TRANSPORT AMATEUR FINAL</b>	Height approx. 120cm Article 238 2.2 1st \$350, 2nd \$250, 3rd \$150, 4th \$100, 5th \$100, 6th \$100 + prizes and ribbons to 8th <b>TOTAL \$1150</b>	
	CLASS 22	1.45pm <b>KING RANCH EQUESTRIAN JUNIOR FINAL</b>	Height approx. 125cm Article 238 2.2 1st \$600, 2nd \$350, 3rd \$250, 4th \$150, 5th \$100, 6th \$100, 7th \$100, 8th \$100, <b>TOTAL \$1,850</b> <b>Max 2 horses per rider.</b>	

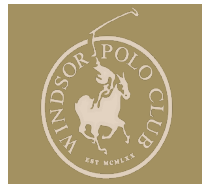
Please note – all times published are approximate and to be used as a guide only.



# OPTIONAL EXTRA CHARGES

<b>STABLING WINDSOR POLO CLUB GROUNDS</b>	<b>\$380</b> Includes 4 Bags of shavings (shavings need to be wet down in stables upon arrival) . Powered campsite included with stable booking Limited Numbers
<b>EXTRA SHAVINGS FOR WINDSOR POLO GROUNDS</b>	<b>\$15 Per Bag</b> Extra shavings need to be booked at time of entry. No extra shavings will be available at the show. (shavings need to be wet down in stables upon arrival) .
<b>STABLING HAWKESBURY SHOWGROUNDS</b>	<b>\$30 per night</b> NO Shavings Included . Riders need to organise own bedding. Riders will need to transfer to Polo Grounds each day. Limited Numbers
<b>YARDS WINDSOR POLO CLUB GROUNDS</b>	<b>\$100</b> duration of show – Powered campsite included with Yard booking Limited Numbers
<b>CAMPSITES HAWKESBURY SHOWGROUNDS</b>	<b>\$30 per night</b> Riders will need to transfer to Polo Grounds each day. Limited Numbers
<b>VIP TICKET</b>	<b>\$1000</b> per person Includes access SATURDAY and SUNDAY

# WINDSOR POLO CLUB CONDITIONS



Windsor Polo Club fields and facilities are thr pride and joy, we want you to enjoy them as much as possible but please treat these amazing facilities and your fellow players with the respect they deserve. Please enjoy yourselves but be mindful to adhere to the Code of Conduct & Club Rules below as they are there for your safety, benefit of our members and players. Every person using the polo fields at Windsor Polo Club must abide by the Code of Conduct and Club Rules as they apply to riding and horse related activities.

**Anyone entering Windsor Polo Club agrees to the following rules:**

- **HELMETS** – Must be approved helmets and must be worn at all times whilst riding
- **HORSES** – Horses must be always under control
- **DOGS** – Dogs must be on a leash and always restrained
- **EXTERNAL GATES** – External gates are to be kept closed at all times
- **VEHICLES** – Maximum speed limit of 20 km/h anywhere on the property. Vehicles must not drive past signage that clearly says No vehicle Access. i.e. no cars are allowed behind the #1 field. Vehicles must NOT drive on any part that are the fields. No vehicles may be parked within 10 metres of the sidelines of the polo field
- **E WHEELS** – Only permitted AFTER all horse activities are finished for the Day. Helmets must be worn when riding E Wheels.
- **STABLING** –Yards must be left clean with chains up and manure removed to designated pooch pits
- **PARKING** – No parking of floats at the Northern end of the grounds. No parking in the driveway access to the mound between #1 and #2
- **LITTER** – All litter is to be placed in rubbish bins provided
- **GOOD BEHAVIOUR** – Poor behavior or disrespect towards other people or animals will not be tolerated and offenders will be asked to leave the property.





### Divas Beverages

Delicious. Different.

Carrying ranges such as Vkat, Gems and Glades you can find Divas products at all good independent liquor stores.

[website](#)



### Winnings

Winnings are Australia's leading kitchen and laundry specialist, they carry a superb range sourced from the worlds finest brands.

[website](#)



### Peachester Lodge

In the heart of the Sunshine Coast's majestic hinterland, dedicated horsemen and horsewomen raise equine athletes from foal to racehorse.

[website](#)



### Ashford Farm

Ashford Farm founded by Enda Carroll are committed to finding the right sport horses for clients to enable them to excel at the highest level of the sport.

[website](#)



### Team Chatham Park

Chatham Park is an equestrian facility located in Glossodia, within the Hawkesbury Valley. Owned by the Douglass family, specializing in breeding and competition.

[facebook](#)



### J J Robertson & Sons Transport

A trusted, family-owned logistics company based in Sydney. They specialize in LCL and FCL cargo transport, offering expert container handling, warehousing, and efficient distribution services across Sydney and regional NSW.

[website](#)



### Magic Millions

Magic Millions is Australia's premier thoroughbred auction house, renowned for its flagship Gold Coast Yearling Sale and the \$14.5 million The Star Gold Coast Magic Millions Raceday.

[website](#)



### G Brothers

G Brothers Mercedes-Benz in Mona Vale offers new, demo, and used vehicles, plus servicing. Trusted on Sydney's Northern Beaches.

[website](#)



### King Ranch Equestrian

King Ranch Equestrian run by the Hercus family specializes in showjumping, offering training and competition services.

[instagram](#)



## Sydney Jumping Association

Sydney Jumping Association offers riders year-round jumping events and training days on world-class surfaces at Windsor Polo Club. They provide opportunities to train, produce, and campaign horses.

[facebook](#)



## Yandoo Park

Yandoo Park is a premier equestrian facility specializing in breeding, training, and competing top-tier show jumping horses. Run by Jamie Winning Kermond and Jamie Kermond they also work closely with Josh and Emma Collins.

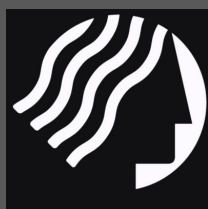
[instagram](#)



## IRT

IRT is a world leader in horse transport, trusted globally for 45+ years, offering expert, safe service across five countries with unmatched industry experience.

[website](#)



## Ciaron Maher Racing

Ciaron Maher Racing is Australia's premier racehorse training operation, renowned for its passion, discipline, and innovative approaches. Talk to them about syndicates today.

[website](#)



## Giddiup Building Fencing & Design

Specialise in timber barns and post-and-rail fences, catering to equestrian facilities. They have contributed to notable equine venues, including the Sydney International Equestrian Centre and Sydney Polo Club.

[website](#)



## Coolmore Australia

Coolmore Australia, located in Jerrys Plains, is a leading thoroughbred breeding operation known as the "Home of Champions."

[website](#)



## Volpaia Park

Volpaia Park is a boutique training and coaching facility for showjumpers, based in Drouin South run by Sam and Susie Williams.

[facebook](#)



## Sutto's Powersports

Sutto's Powersports, primarily focused on motorcycles and powersports vehicles, offers products like the Can-Am Defender HD8 XU, suitable for tasks such as horse management.

[website](#)



### **Anneliese Downing Equine**

Fin 2017, is a veterinary practice located in East Kurrajong, NSW that clinic specializes in equine health services, including pre-purchase examinations and syndication assessments.



### **Double C Farms**

Double C Farms is a showjumping stable operated by Chase Naylor and Cody Mulder. They provide services in training, campaigning, sales, and young horse/foal handling.

[instagram](#)



### **Greengrove Stud Farm**

Greengrove Stud is a boutique equine facility on the Central Coast, focused on breeding, training, and selling quality showjumpers. Agistment is also available.

[facebook](#)



### **Hadassah Academy**

Haddassah Academy is a leading equestrian centre offering professional coaching, rider development, and agistment. With top facilities and expert training, they're dedicated to producing excellence in showjumping.

[website](#)



### **Holsteiner Verband Australia & New Zealand**

Holsteiner Verband Australia & New Zealand is dedicated to promoting Holsteiner horses in the region. They offer access to 26 licensed and approved stallions

[website](#)



### **Kallaroo Park Equestrian Centre**

Kallaroo Park Equestrian Centre, located on Sydney's Northern Beaches, offers top-tier full-service agistment, including feeding, daily turnout, stabling or yarding at night, and access to modern facilities

[website](#)